



Cheshire Contractors Pty Ltd

A.B.N. 75 124 700 385

Company Profile – Capability Statement



COMPANY PROFILE & CAPABILITY STATEMENT

Cheshire Contractors
Pty Ltd



ESTABLISHED 1979

RELIABILITY. EXPERIENCE. EXPERTISE

ABSTRACT

Cheshire Contractors Pty Ltd. is proud to say we are Far North Qld owned and operated and specialise in civil construction, earthmoving and heavy machinery plant hire. We're highly skilled in many areas, mainly in earthworks, roadworks, sub-divisional work, civil infrastructure, aquaculture and turf-based construction. We've completed a vast number of projects across Queensland, Cape York Peninsula and the Torres Strait Islands, supporting the local community wherever we can for the duration of the project. These projects and many more, have earned Cheshire Contractors an enviable reputation for providing quality work on every project.





Company Profile – Capability Statement

Table of Contents

1. Executive Summary	3
2. Key Personnel	5
2.1 Cheshire Contractors Organisational Chart.....	9
3. Employment and training of Indigenous people	11
4. Core Capabilities	12
5. Equipment and Resources	14
5.1 Equipment and Resources contd.....	15
6. Drone Captured Data.....	17
6.1 Visualized, 3D drone-captured site data,.....	17
7. Our Dedication to Health & Safety	20
8. Our Dedication to protecting the Environment.....	20
8.1 Cheshire Contractors Key Environmental Objectives:	20
9. Our Dedication to Quality Assurance	21
10. Projects – refer to www.cheshirecontractors.com.au/projects	21
10.1 E2G – Cairns Southern Access Corridor Edmonton to Gordonvale Bruce Highway	21
10.2 Captain Cook Highway – Smithfield Bypass	22
10.3 Brodie Street, Hughenden - Revitalisation Roadworks	23
10.4 Serenty Stage 1, Mission Beach - Subdivision.....	24
10.5 Hughenden - Recreational Lake and Surrounds Precinct Project.....	25
11. How to get in Touch with Us	26

Company Profile – Capability Statement

1. Executive Summary

Cheshire Contractors Pty Ltd is a locally owned and operated civil construction; earthmoving and heavy machinery hire company that has been in operation since 1979. Over this time, we have undertaken and completed a vast number of projects across the entire state of Queensland, Cape York Peninsula and the Torres Strait Islands for an array of clients including private developers, property developers, Local & State Government, Aquaculture industry and Thoroughbred Racing industry. These projects and many more, have earned Cheshire Contractors an enviable reputation of providing quality work, every project. Our company is highly skilled in the any of the following types of work:

- Road works
- Bulk Earthworks
- Minor Excavation and Non-Building Civil Engineering Construction
- Sewer and Wastewater Reticulation and Renewals
- Water Mains, Reticulation and Renewals
- Storm water Drainage
- Excavation for Electrical & Telecommunications
- Erosion & Sediment control works
- Aquaculture works
- Agricultural drainage systems
- Turf based construction (Bulk and Fine)
- Water Storage Facility Construction





Cheshire Contractors Pty Ltd

A.B.N. 75 124 700 385

Company Profile – Capability Statement



Company Name:	Cheshire Contractors Pty Ltd
Australian Company Number:	124 700 385
Australian Business Number:	75 124 700 385
Office Address:	<u>Cairns:</u> 546-550 Bruce Highway Cairns QLD 4870 <u>Hughenden:</u> 9 Lammermoor Street Hughenden QLD 4821
Postal Address:	P.O. Box 142, Bungalow, QLD 4870
Telephone:	(07) 4052 2700
Email:	admin@cheshirecontractors.com.au
Web Site:	www.cheshirecontractors.com.au
Public Liability Insurance:	ATC Public & Products Liability
Amount of Cover:	Public Liability \$20,000,000-00 Products Liability \$20,000,000-00
Workers' Compensation:	WPA080793618

Company Profile – Capability Statement

2. Key Personnel

John Della Ricca – Managing Director



Career Profile

John began his career as an apprentice Diesel and Heavy Earthmoving Equipment Fitter with Hastings Deering in 1981. Throughout his apprenticeship John regularly exceeded his superior's expectations and spent the 3rd and 4th years of his training completing field service. He received his trade qualification with honours in 1985 and immediately obtained work in Papua New Guinea with Hastings Deering Pacific where he spent two years as the Maintenance Foreman to a crew of 10 fitters responsible for an extensive range of mining machinery. In 1988 John returned to Australia and started his own successful contracting business that ran for the 13 years. During this time, John built and fostered strong, reliable working relationships with many civil and mining contractors and heavy machinery hire companies through quality and timely service. It was then, in 2001, the opportunity arose to purchase a 50% share in one of the very companies he was servicing, Cheshire Contractors. Today, John is the successful partner, director and manager for a number of businesses, including:

Today, John is the successful partner, director and manager for a number of businesses, including:

- Cheshire Contractors (Plant Hire)
- Cheshire Contractors Pty Ltd (Civil Construction/Earthmoving)
- Cheshire Fox Della Ricca and Court (Industrial Developments)



Company Profile – Capability Statement

Shannon Cheshire – Operations/Contracts Manager/Safety Officer

Career Profile



Shannon has over 22 years' experience within the civil construction industry and has been awarded the role of Operations/Contracts Manager at Cheshire Contractors. Shannon has progressively worked his way through several roles including labourer, pipe layer, concreter, multiple machine operator, leading hand and Foreman. Shannon holds a Certificate IV in Civil Supervision and was the Civil Contractors Federations' apprentice of the year in 2007. Shannon's extensive experience has enabled him to work successfully with clients as well as workers to get the job done on time and within budget.

Relevant Project Experience

Listed below are a number of similar recent projects that Shannon has been involved with directly as Foreman:

- PDR – Archer River to Merluna Station Main Deviation Upgrade
- McDonnell Creek Centreline Widening Upgrade
- Murray Falls Bridge Crossing
- Mountain View Residential Subdivision Stage 10a
- Gordonvale Service Station Intersection Upgrade
- NDRRA Works
- Riverview Estate Stage 1 & 2
- Aurukun Residential Subdivision Stage 1 – Department of Housing and Public Works
- Aurukun Residential Subdivision Stage 2 – Department of Housing and Public Works
- Oasis Mission Beach Subdivision – Baracon
- Seaview Estate Mission Beach Subdivision – Les Blennerhassett

Qualifications

- Diploma of Project Management (BSB50820) – Orbus3 Pty Ltd
- Diploma of Civil Construction Management (RII50415) - Orbus3 Pty Ltd
- Manage Project Integration (BSBPMG540) – Orbus3 Pty Ltd
- Certificate IV in Civil Supervision (RII40712) – Training & Assessment Mentor (TAM)
- Certificate III in Civil Construction Plant Operations (RII30815) – Civil Train QLD
- Apply Risk Management Processes (RIIRIS301E) - Orbus3 Pty Ltd
- Statement of Attainment Explosives
- Civil Contractors Federation 2007 Apprentice of the Year Award

Company Profile – Capability Statement

Steve Camp – Project Manager/Engineer



Career Profile

Steve is a qualified Civil Engineer with over 29 years of experience. Steve finished his Bachelor of Engineering (Civil) with Honours in 1994 and entered the consulting industry undertaking various positions. Steve has covered many fields of engineering including civil, structural and geotechnical which has gained him extensive experience

in the planning, design, and construction of projects. In particular Steve's strengths lie in all aspects of Subdivision works, drainage infrastructure, road works and bulk earthworks. Steve's experience and knowledge enables him to manage projects involving difficult and challenging work environments and conditions.

With Steve's consulting background and broad range of knowledge he brings an extraordinary level of quality and understanding to all aspects of his work. Steve oversees the total management of all our projects and through professional communication ensures effective delivery is achieved.

Qualifications

- Bachelor of Engineering (Civil) IIA Honours, James Cook University (Townsville) 1994
- RPEQ - Registration as a Professional Engineer of Queensland 2001

Craig Coyne – Surveyor / Draftsman / Project Supervisor



Career Profile

Craig began his tenure with Cheshire Contractors in 2004 as a surveyor/draftsman. Throughout the past 15 years, Craig has been and is responsible for project survey operations, preparing and creating As-constructed drawings and preparing and implementing Traffic Management and Erosion Sediment Control plans. Craig also holds RII30815 Certificate III in Civil Construction Plant Operations

Craig also plays a key role with project designs. He has a keen eye for detail and is well versed in design software programs such as Auto-Cad as well as in the use of ATS, SPS and GPS surveying equipment. Within the past 5 years Craig has supervised a number of projects for Cheshire Contractors, working closely with our Engineers and operators.

Craig also holds RPA operator accreditation, this accreditation authorises the holder to operate excluded RPA, micro RPA and model aircraft. Issued in accordance with regulation 101.374E of the Civil Aviation Safety Regulations 1998. With this accreditation Craig is fully qualified with all aspects of the propeller drone technology which gives highly accurate topographical data which can be collected more frequently, and at a lower price point. Furthermore, with more survey data means that Cheshire Contractors can, execute designs with greater precision, track our progress (and the progress of subcontractors), Catch errors and maintain a record of our work for real life progress.

Company Profile – Capability Statement

Relevant Project Experience

Listed below are a number of similar projects that Craig has been involved with directly as the Surveyor/Draftsman:

- Hughenden - Recreational Lake and Surrounds Precinct Project - Flinders Shire Council
- Cardwell - Intake Sediment Ponds Upgrade - Seafarms Pty Ltd
- Mission Beach - Blenners Subdivision Phase 1- Les Blennershassety
- Cassowary Coast – Cassowary Coast Road upgrade Packages 2,3,4,6,7 – Cassowary Coast Regional Council

Carla Cheshire – Accounts Manager



Career Profile

Carla is an experienced and qualified finance Manager with prior experience in similar roles in which Carla managed the entire accounting function of the business. Carla has a strong technical accounting skill, advanced proficiency in excel and experience using large ERP systems. Additionally, Carla possesses the ability to effectively communicate analysis of key financials to the senior management, furthermore Carla is responsible for:

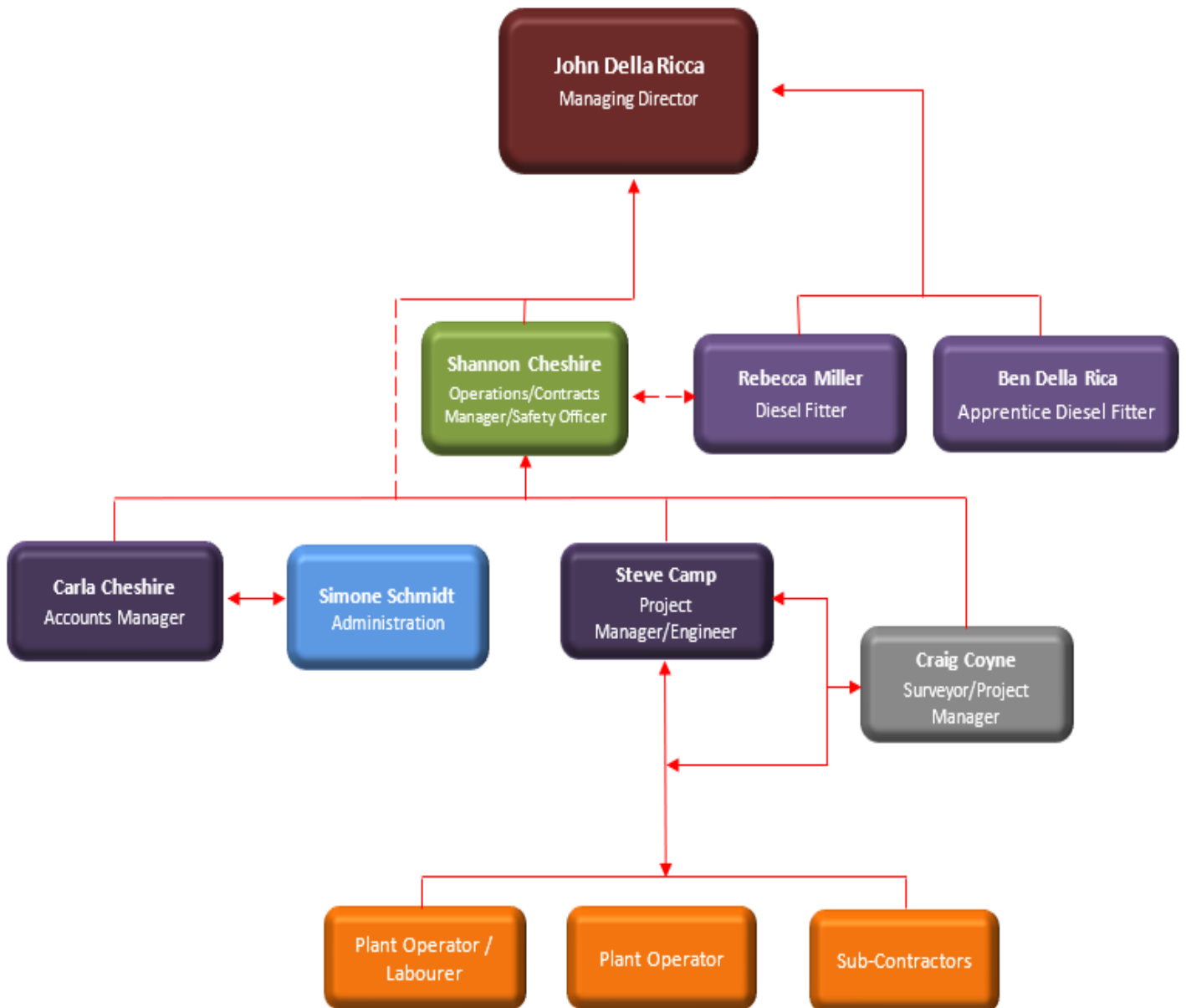
- Undertake analysis of budget performance and the ongoing monitoring, reviewing, and reporting of budget activities.
- Weekly and monthly cash flow forecasts and working capital management.
- BAS
- Accounts Payable and Accounts Receivable
- Ad hoc reporting
- Reconciliations of general ledger accounts
- Management of company payroll including staff superannuation and preparing legislative and statutory returns, including income tax, payroll tax and BAS returns.
- Work closely with external accountants to ensure that year-end financials and tax returns are all completed and lodged.

Qualifications

- Bachelor of Business (Majoring in accounting), James Cook University

Company Profile – Capability Statement

2.1 Cheshire Contractors Organisational Chart



Company Profile – Capability Statement

3. Employment and training of Indigenous people

Cheshire Contractors Local and Indigenous Employment and Opportunities Plan outlines the specific commitments Cheshire Contractors will make in the areas of Indigenous employment, cultural recognition and capability, financial capability as well as capacity building in areas that are directly related to our business, our staff and the communities in which we operate. By delivering on these commitments, our aim is to contribute to increased financial and social well-being for Aboriginal and Torres Strait Islander peoples, and to create broader regional benefit in Cape York and the North West through maximising local participation. This plan includes contracted deliverables through the federal Department of Prime Minister and Cabinet to provide work experience placements for a minimum of Indigenous CDP participants) sourced from the communities of Aurukun, Cherbourg, Coen, Doomadgee, Hope Vale, Kowanyama, Lockhart River, Mapoon, Mornington Island, Mossman Gorge, Napranum, Northern Peninsula Area (includes Bamaga, Injinoo, New Mapoon, Seisia and Umagico), Palm Island, Pormpuraaw, Woorabinda, Wujal Wujal and Yarrabah.

Our focus is on capacity building designed to unlock the potential of Cheshire Contractors staff, including Indigenous people and increase opportunities to build self-esteem and to encourage self-development. We recognise that meaningful employment leads not only to improved opportunities for the individual, family and communities, but also enhances Indigenous culture, heritage values and beliefs, consequently Cheshire Contractors has a related training entity, Civil Safety FNQ operating out of Cairns and Weipa, that is able to provide quality accredited training in civil construction and mining services which will be of significant benefit to Indigenous and non-Indigenous trainees and operators from the North West & Cape York region.



Company Profile – Capability Statement

4. Core Capabilities



Civil Construction and Design

- In-house engineering design capabilities to deliver complete and economical design solutions
- Feasibility Costing
- Constructability assessments with a particular strength in erosion control and dealing with high rainfalls and water flows

Infrastructure and Utilities Earthworks including:

- Bridges
- Culverts (concrete/steel) and civil works near waterways
- Dams and Ponds
- Water reticulation, water mains and water treatment facilities
- Sewer reticulation, sewer rising mains, and sewer pump stations
- Civil infrastructure – civil concrete construction (in-situ)
- Dewatering Operations
- Services Installation – communications and data conduit installation and electrical conduit *installation*

Bulk and Detailed Earthworks including:

- Site clearing and site preparation on greenfield and brownfield sites. Cheshire Contractors have extensive experience in brownfield site construction and in working in hard to access, and environmentally sensitive areas
- Camp site earthworks including bulk and detailed earthworks for services installation (water, wastewater power, data and telecommunications)
- Building pads for mines and industrial facilities, gas processing plants and other facilities
- Earthworks for gas gathering infrastructure and pipelines
- Turf Based Constructions – golf courses, racecourses and sports fields

Road Construction including:

- Sealed roads – Local and Regional
- Unsealed roads and access ways
- Road Maintenance and rehabilitation works including flood repairs
- Sprayed bitumen emulsion sealing and pothole repairs (In-House capability with Autopatch Truck)
- Concrete road pavements and footpaths

Plant Hire

- Wet and Dry Hire arrangements

Company Profile – Capability Statement

Drainage & Erosion Control

Cheshire Contractors has developed a unique product that manages drainage and mitigates potential erosion impacts –

- Monks (precast concrete hydraulic level control structures) – Cheshire contractors designed product to control the hydraulic level and drainage of ponds on aquaculture farms. Some of these aquaculture farms were wholly designed by Cheshire Contractors.

Camp & Logistics Support

Cheshire Contractors specialises in project delivery in remote, environmentally sensitive and hard to access locations. In-House support includes:

- Self-contained camps for workers
- Plant & Equipment transport vehicles with road train configurations
- Sea transport and logistics management

Cheshire Contractors undertakes this work for industries including:

- Oil and Gas
- Council, Main roads
- Mining
- Rail
- Agriculture
- Aquaculture
- Residential, commercial and industrial subdivisions

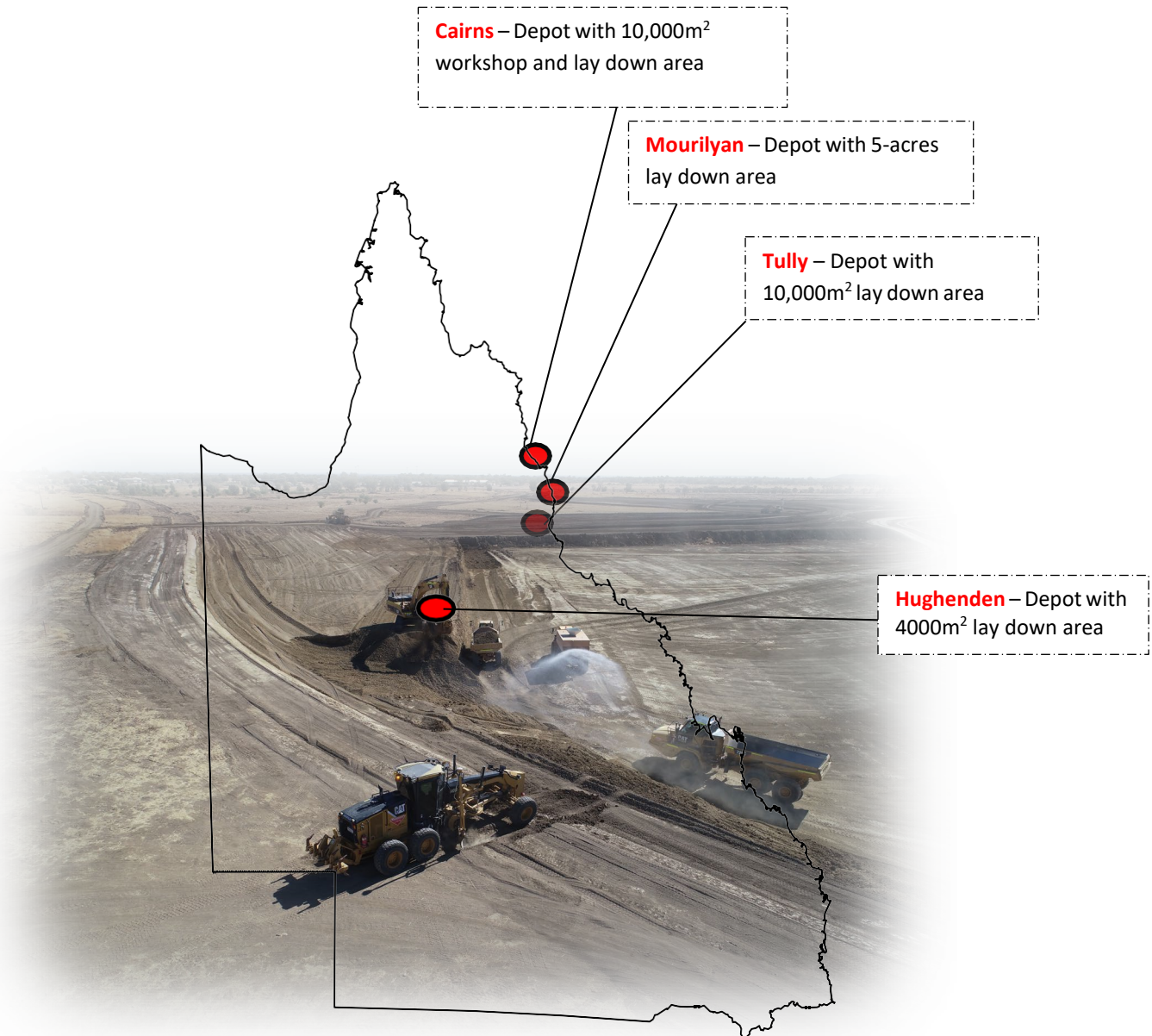
**Cheshire
Contractors
operates
throughout
Queensland and
can operate in
other regions
upon request.**



Company Profile – Capability Statement

5. Equipment and Resources

Cheshire Contractors operates from 4 depots and workshops located in:



Company Profile – Capability Statement

5.1 Equipment and Resources contd.

Cheshire Contractors owns and operates all our own machinery. We take great pride in keeping our plant in good working order and conduct maintenance from routine to major rebuilds in-house at our industry leading workshop in Cairns. The workshop is managed by John Della Ricca who is a director of the business and employs 4 other diesel fitters. We also have 2 field mechanics that provide onsite repairs to reduce downtime. Our extensive range of machinery includes: -

- 5 Caterpillar 615C Scrapers
- 5 Caterpillar Graders (140H,16H,140M)
- 4 Caterpillar Excavators (22t,24t,25t 49t)
- 2 Volvo Excavators (30t)
- 1 Volvo A25C Articulated Dump Truck
- 7 Caterpillar 725C Dump Trucks
- 5 Rollers (Smooth Drum, Padfoot, Multi)
- 2 Caterpillar 815B&F Compactor
- 1 Caterpillar D8T Dozer
- 3 Water trucks 13000KI
- 2 semi water trucks 32000KI
- 3 Backhoes
- 1 Quad Axle widening float with dolly.
- 1 Triaxle Widening Float
- 1 Step Deck Tri-Axle
- Prime Movers
- 3 Truck & Quad Dogs
- 7 Body Trucks
- 1 Mack Tandem Service Truck
- 1 Paveline Autopatch Truck
- 35 Light Vehicles
- Many other sundry items of equipment necessary to get the job done



Company Profile – Capability Statement

Cheshire Contractors also operates its own low loader to enable machinery to be shifted as required. Our machinery is complemented by our fleet of 35 vehicles for servicing, supervisors, foreman and construction crews.

We are also equipped with the latest GPS 3D grade control systems, SPS Total Stations and Precision Lasers. The GPS 3D grade control system fitted to earthmoving machinery allows for greater accuracy in excavations and reduces the need to have grade checkers or survey stakes installed which increases productivity. This system is fitted to our Caterpillar 324D and Volvo 30t Excavators and our Caterpillar 140H, 140M and 16H Graders. The SPS (Satellite Position System) Construction Total Stations is used for all of our construction set-out and as constructed survey. All of our earthmoving machinery can be fitted with laser levels to undertake bulk earthworks and trimming operations



Company Profile – Capability Statement

6. Drone Captured Data

Cheshire Contractors are one of the first Civil Construction Businesses in F.N.Q to use 3D Drone captured



Cheshire Contractors – Hughenden Recreational Lake

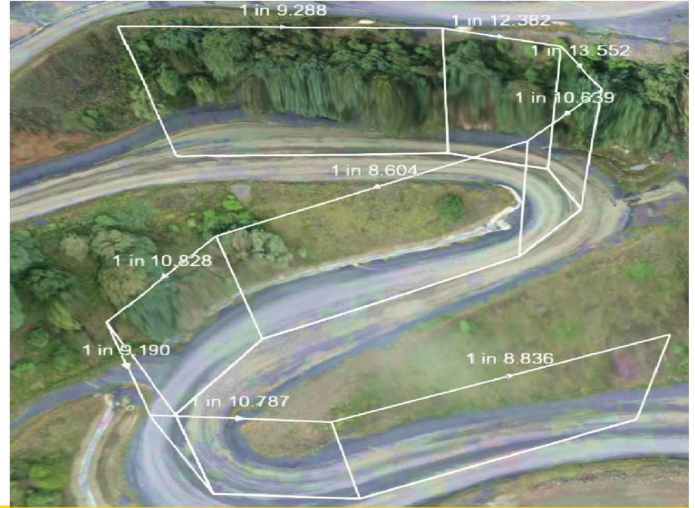
6.1 Visualized, 3D drone-captured site data,

Cheshire Contractors is reducing their boots-on-the-ground surveying costs, scaling up business, and solving contractor disputes with high data confidence when they arise. Changing the heavy civil and resource industries operate, Propeller is helping teams measure and manage their sites themselves. The cloud-based analytics platform known as Propeller visualizes drone survey data to allow teams to track their worksites' progress and productivity, and make data-driven decisions that reduce costs, ensure quality, and use resources efficiently.

Cheshire Contractors Pty. Ltd. now gets a better look into dirt movement on their sites and a better understanding of who is moving what dirt, where, and when. Cheshire Contractors wanted a solution that would give them transparency into the status of their site and reduce time spent in the field surveying so they could focus on winning larger projects and scaling their business. And win larger projects they did. After winning the bid on a 160 hectare [395.369 acre] project, a site that would take close to 20 days to survey, Cheshire Contractors, knew they had to find a complete solution that combined **drone photography** with survey-grade data. Cheshire Contractors chose Propeller because its easy-to-use platform made frequent drone survey capture a reality. It would reduce the time the team spent in the field and produce 3D visualized drone survey data that we could take back to our client—a competitive advantage.

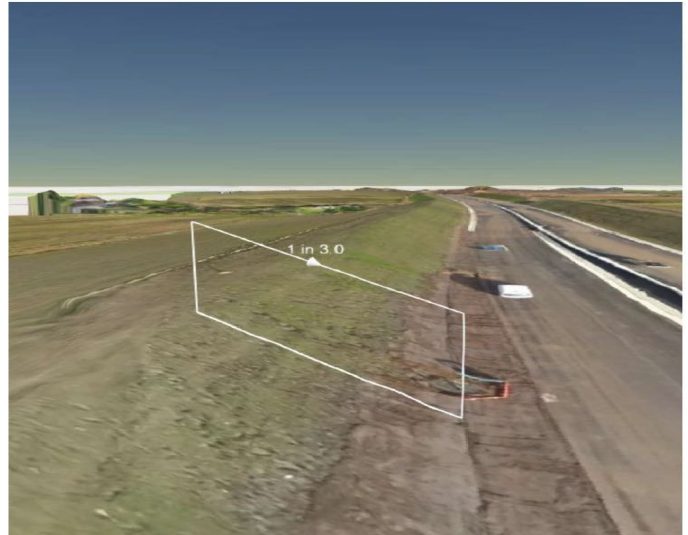
Road and asset management

- A **detailed aerial site map** helps you manage traffic flow and ensure optimal site access.
- Measure **road grades** and **windrow heights**.
- **Ensure haul roads are optimized** for productivity.



Ensure compliance

- Track **conformance to design** by measuring against previous surveys or imported surface designs.
- Ensure you're keeping within **site boundaries**.
- **Reduce reporting overheads** for regulatory compliance (environment, heritage, municipal governments, etc).



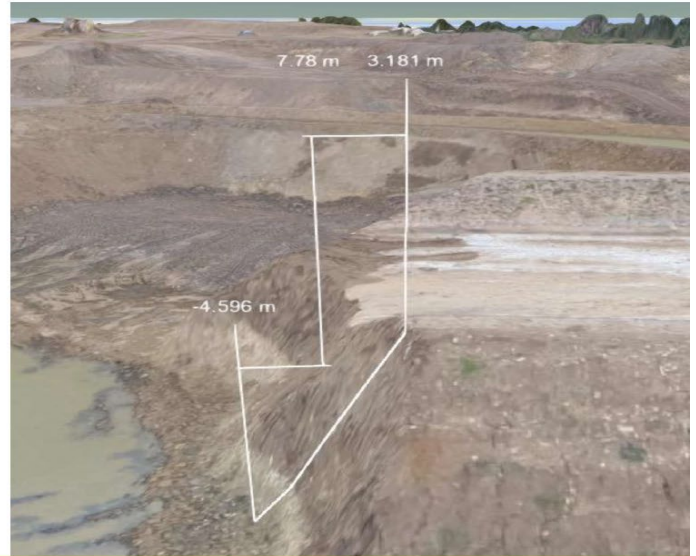
Internal communications

- Puts accurate, **up-to-date information** in the hands of site teams making important day-to-day decisions.
- **Frees up survey teams**, letting them focus on more complex, valuable work.
- Improve the clarity and speed of internal communication; **reduce the risk of misunderstandings** and costly mistakes.



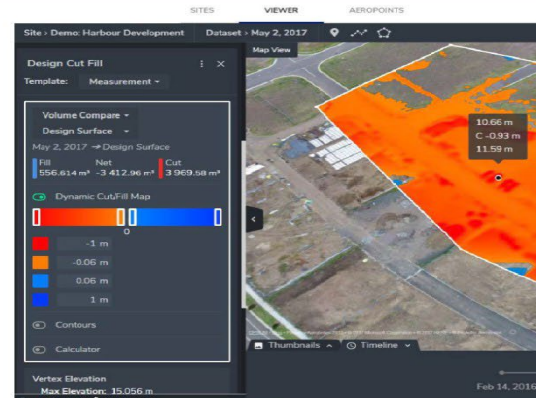
Safety benefits

- **Inspect hazardous areas** without putting personnel in danger; reduce exposure to harmful toxins.
- Monitor wall angles, and stockpile heights/angles to **identify potential slips** before they happen.
- Identify hard-to-see **hazards** that would be impossible to spot from ground-level.
- Check **bench heights, berms** and **windrows**, and have a record of compliance.



Propeller Provides Real World Solutions

- **Access from anywhere** you have internet connection.
- Supports every coordinate system + **local site calibrations**.
- Create and analyze accurate **3D terrain models** in browser.
- Track inventory on hand: Calculate current and changed **stockpile volumes**.
- **Visually compare** against previous surveys or imported surface designs.
- Measure **change over time** and produce cut/fill reports.
- Ensure haul roads are designed for productivity with **gradient and cross section** tools.
- Easily create and **distribute templates and reports**.



Company Profile – Capability Statement

7. Our Dedication to Health & Safety

Cheshire Contractors recognises that to provide an efficient and productive work environment, health and safety in the workplace is essential and is our #1 priority. The company is dedicated to ensuring the health, safety and wellbeing of all our employee's sub-contractors, clients, suppliers, the members of the public and our aim is for a goal of zero incidents, accidents, injuries and environmental impacts.

Cheshire Contractors has an established Health, Safety and Environmental Management System, specifically designed to address our operations, with full management commitment to the ongoing continuous improvement of the Health, Safety and Environmental Management System, focusing on all safety issues that may affect our operations, we achieved this through effective consultation with employees and subcontractors monitoring of procedures and standards, audits and inspections.

The Cheshire Contractors Health, Safety and Environmental Management System fully aligns with ISO 4801 :2018 & ISO 14001 :2015

Cheshire Contractors continually commits to promoting a strong safety culture to achieve our goal of zero incidents, accidents, injuries and zero environmental impacts; this is reflected in our excellent safety performance indicators.

8. Our Dedication to protecting the Environment

Cheshire Contractors recognises the importance of implementing measures to mitigate or eliminate impact to our environment. Environmental management planning is integrated into all our business activities. Cheshire Contractors has an established environmental management system fully aligns to ISO 14001 :2015.

All projects undertaken by Cheshire Contractors are specifically evaluated with a documented project specific Environmental Management Plan (EMP) established and maintained.

The Health, Safety and Environmental Management System has been developed to improve Cheshire Contractors environmental performance and defines the framework for the effective management of the identified environmental aspects of our business activities.

8.1 Cheshire Contractors Key Environmental Objectives:

- Conduct our operations in accordance with the relevant environmental legislation, regulations, codes of practice and standards.
- Provision of an effective risk management process for the ongoing identification of environmental impacts in relation to our projects and business activities.
- Ensure environmental responsibilities are established for personnel.
- Set specific environmental objectives and targets in relation to our business activities and ensure they are monitored and maintained.
- Ensure staff are provided with adequate environmental education and training to continually improve awareness, performance and knowledge of environmental issues;
- Establish and continually improve environmental objectives for inclusion in project planning and management;
- Ensure waste minimisation principles are established and applied to project operations; and
- Commitment to ensuring all personnel and subcontractors respect the environment including the rights and opinions of local communities and the preservation of cultural and heritage locations.

Company Profile – Capability Statement

9. Our Dedication to Quality Assurance:

Our goal is to consistently deliver quality products and exceed client expectations. We accomplish this through considerable effort and expense into management and maintenance of our Quality Management System and the involvement of our employees who support and uphold the Quality Management System.

Cheshire Contractors Quality Management System fully aligns to ISO 9001 :2015

10. Projects – refer to www.cheshirecontractors.com.au/projects

10.1 E2G – Cairns Southern Access Corridor Edmonton to Gordonvale Bruce Highway

John Holland Seymour White AECOM Joint Venture - \$481m

The E2G roadworks project is a \$481m upgrade of 10.5km of Bruce highway between Edmonton and Gordonvale. This roadworks project will make travelling safer, more reliable and improve flood resilience for North Queensland. We at Cheshire Contractors were pleased to work with JSA JV in the construction of the project by assisting with the hire of our mobile plant equipment and skilled operators. Some of our heavy machinery working onsite included D8T Dozer, Scrapers, Graders, Semi Water Trucks, Backhoes, Moxy Dump Trucks and an 815 Compactor.



Company Profile – Capability Statement

10.2 Captain Cook Highway – Smithfield Bypass

Queensland Government - \$164M

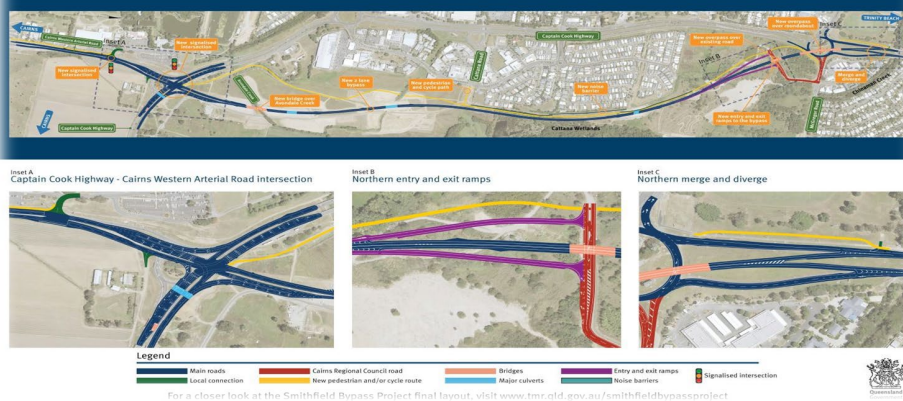
With the accelerated growth of Cairns and the Northern Beaches, this bypass was vital to the community by assuring transport needs for the area. This bypass allows for a safer, more efficient travel route for motorists and industry.

The project consisted of numerous stages and construct of; two major bridges, a 2-lane 3.8km bypass, a new overpass bridge, merge and diverge lanes, the upgrade of CWAR to 4 lanes, traffic signals, off-road shared pathway to support the active transport community and on-off ramps. Cheshire Contractors was pleased to work with Qld Government for the duration of this project. We provided skilled operators as well as a range of our heavy machinery for hire on site.



Captain Cook Highway - Smithfield Bypass Project

Final Layout
November 2020



Company Profile – Capability Statement

10.3 Brodie Street, Hughenden - Revitalisation Roadworks

Flinders Shire Council - \$2m

Brodie Street in Hughenden is one of the main thoroughfares for travellers around Queensland. Flinders Shire Council contracted Cheshire Contractors to do a complete upgrade on Brodie Street, which involved lowering the existing road levels across the road and to the surrounding shops, installing new asphalt, and line marking to comply with disability access standards. The structures in the street were also revitalised with a fresh new look which included seated areas with USB charging stations and extended seating areas to the local cafes. A dual car charger was also installed for the environmentally friendly vehicles driving in and around Hughenden. This project was completed in time and on budget while working with the Flinders Shire Council, the community and the local businesses of Brodie Street.

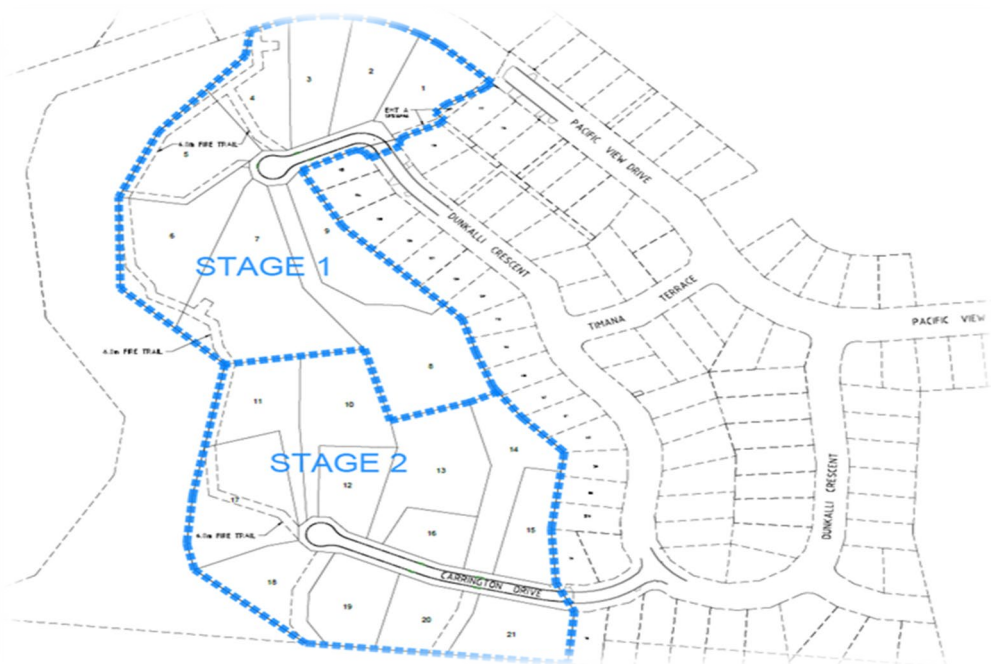


Company Profile – Capability Statement

10.4 Serenity Stage 1, Mission Beach – Subdivision

Serenity Partnership - \$350k

Cheshire Contractors took on the challenge of constructing Serenity Stage 1 in Mission Beach, a small subdivision project, amid the town's booming development. Approached by a forward-thinking developer, we faced the tight deadline of completing the project just before the onset of the wet season and the holiday shutdown. Leveraging our expertise, we successfully delivered the subdivision on time, ensuring the blocks were ready for sale during the holiday season. The lots, crafted with precision, garnered significant interest and witnessed multiple sales over the holidays, highlighting our commitment to efficient project execution and contributing to the growth of Mission Beach.



Company Profile – Capability Statement

10.5 Hughenden - Recreational Lake and Surrounds Precinct Project

Flinders Shire Council - \$12 M

Cheshire Contractors were contracted by Flinders Shire Council to complete The Hughenden Recreational Lake and Surrounds Major Works contract. The construction of the recreational lake is located on the eastern side of the Hughenden township on land, which is adjacent to the Historical Coolabah Tree, this tree holds cultural significance linked to two relief expeditions searching for Burke & Wills, the site is locally known as Station Creek. The works seen 800,000 cubic metres of dirt excavated, with the lake at completion being approximately 800m long and 250m wide and the average depth will be 3.2m. The project required the construction of a 4-meter-high earth wall embankment, spillway, and excavation of the actual lake area, a boat ramp, and landscaping around the edge of the lake and surrounding parklands. Cheshire Contractors endeavoured to help the local community by employing locals, sourcing products through local suppliers and engaging with local community groups.



Company Profile – Capability Statement

11. How to get in Touch with Us

Office Phone No.	07 4052 2700
Street Address:	546-550 Bruce Hwy, Woree QLD 4868
	9 Lammermoor St, Hughenden QLD 4821
Email Address:	admin@cheshirecontractors.com.au
John Della Ricca – Managing Director	0408 770 117
Shannon Cheshire – Operations/Contract Manager	0418 796 868
Steve Camp – Project Manager & Supervisor	0427 353 255

